

PRODUCT DESCRIPTION

THE RAW MATERIAL OF PPR-C PIPES AND FITTINGS IS CALLED POLYPROPYLENE RANDOM COPOLYMER (TYPE 3). THE RAW MATERIAL IS RESISTANT TO HIGH TEMPERATURE.

TURKPLAST PIPES AND FITTINGS PROPERTIES:

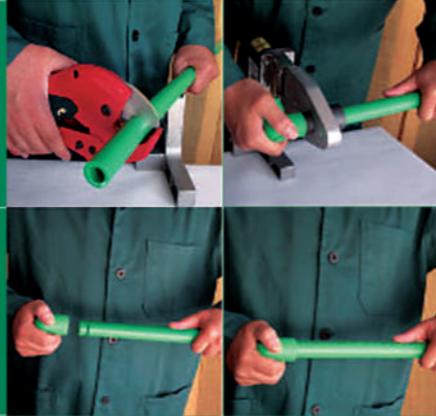
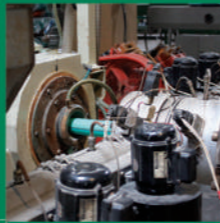
- Corrosion resistant
- Fully hygienic
- Acid and alkali resistant
- Operating pressure: 20 bar at 20 °C and 10 bar at 95 °C
- No change in color and taste of water

TURKPLAST PIPES APPLICATION PROPERTIES:

- Most suitable for hot and cold water supply system in houses, hotels, hospitals and commercial buildings.
- TURKPLAST PPR-C pipes, Which are made of polypropylene Random Copolymer (Type 3) are resistant to chemical substances
- PPR-C pipes and fittings are manufactured in accordance with standards of DIN 8077 and 8078 have long lifespan. They are the best choice for cold-hot fluid transfer and radiator installation as they have high resistance for temperature and pressure.
- TURKPLAST PPR-C pipes and fittings are fit for human health. They can be used safely in portable water facilities and the food industry.
- TURKPLAST PPR-C pipes and fittings are manufactured in green color.

PRECAUTIONS

- Protect pipes and fittings from hard impact.
- Don't expose pipes and fittings to UV-radiation for a long period
- Don't use metal tools to fit the brass fittings.
- Don't apply pipes with flames to obtain any bents or crossovers but using hot air with 140 °C.
- Don't use the hemp to fit the brass fittings.



TÜRKPLAST PPR-C PIPES & FITTINGS



Economical, Reliable & Dependable



www.alifIndustry.com



ALIF INDUSTRY (SMC) PVT. LTD.

4-KM, Managa Raiwind Road, Raiwind. Lahore - Pakistan. PH: (92-42) 35391516-18, FAX: (92-42) 35391510



INNOVATION DURABILITY & LIFE STYLE

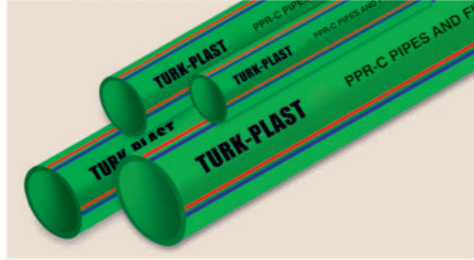
TÜRKPLAST®

TURK PLAST PIPES-PN20



Size (mm)
20
25
32
40
50
63
75
90
110

TURK PLAST PIPES-PN16



Size (mm)
20
25
32
40
50
63
75
90
110

GATE VALVE



Size (mm)
20
25
32
40
50
63

UNION BALL VALVE



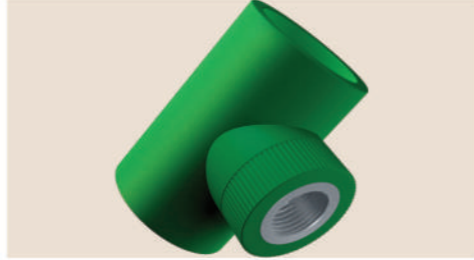
Size (mm)
20
25
32
40
50
63

FEMALE THREADED ELBWO



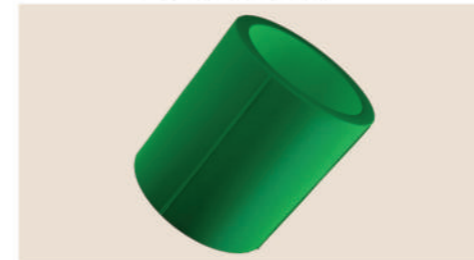
Size (mm)
20x1/2"
25x1/2"
25x3/4"
32x1/2"
32x3/4"
40x1 1/4"
63x2"

FEMALE THREADED TEE



Size (mm)
20X1/2"
20X3/4"
25X1/2"
25X3/4"
25X1/2"
32X3/4"
32X1"
40X11/4"
50X11/2"
63X2

PLAIN SOCKET



Size (mm)
25
32
40
50
63

UNION



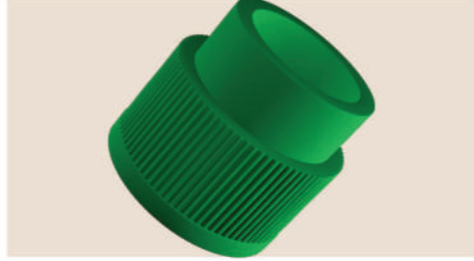
Size (mm)
20"
25"
32"
40"
50"
63"

MALE THREADED ELBWO



Size (mm)
20X1/2"
20X3/4"
25X1/2"
25X3/4"
32X3/4"
32X1"

REDUCER



Size (mm)
25-20 50-32
32-25 50-40
40-20 63-25
40-25 63-32
40-32 63-40
50-25 63-50
75-50

ELBOW 45°



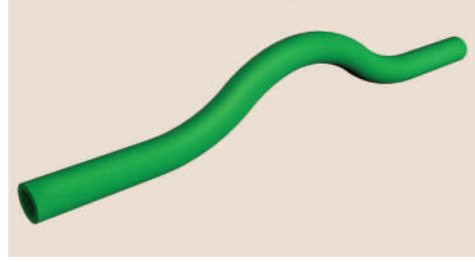
Size (mm)
25
32
40
50
63

ELBOW 90°



Size (mm)
25
32
40
50
63

PIPE BRIDGE



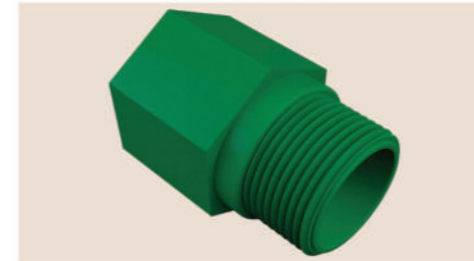
Size (mm)
20
25
32

CLAMPS



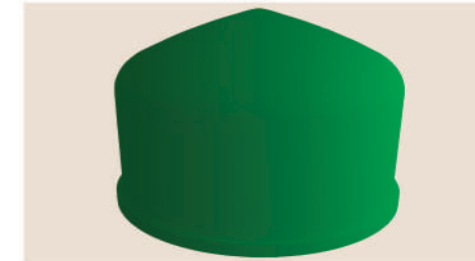
Size (mm)
25-20

END/PLUG



Size (mm)
20X1/2"
25X3/4"
32X1"

END CAP



Size (mm)
25
32
40
50
63

MALE THREADED TEE



Size (mm)
20x1/2"
20x3/4"
25x1/2"
25x3/4"
25x1/2"
32x3/4"
32x1"
40x11/4"
50x11/2"
63x2

FEMALE THREADED SOCKET



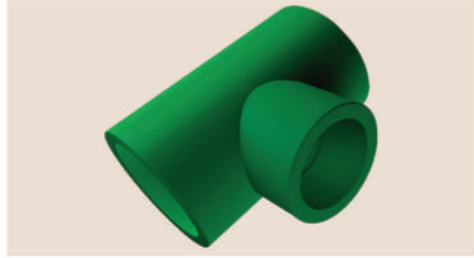
Size (mm)
20x1/2"
20x3/4"
25x1/2"
25x3/4"
25x1/2"
32x3/4"
32x1"
40x11/4"
50x11/2"
63x2

MALE THREADED SOCKET



Size (mm)
20x1/2"
20x3/4"
25x1/2"
25x3/4"
25x1/2"
32x3/4"
32x1"
40x11/4"
50x11/2"
63x2

REDUCER TEE



Size (mm) Size (mm)
25-20-25 40-32-40
32-20-32 50-25-50
32-25-20 50-32-50
32-25-32 50-40-50
40-25-40 63-25-63
63-32-63
63-40-63
63-50-63

JOINTING PROCESS TIME

DIMENSIONS

PIPE DIAMETER (mm)	HEATING TIME (Seconds)	PROCESSING TIME (Seconds)	COOLING TIME (Seconds)	PIPE DIMENSIONS (mm)	OUTER DIAMETER (mm)	WALL THICKNESS (mm)	INTERNAL DIAMETER (mm)
20	5	4	2	20	20	3.4	13.2
25	7	4	2	25	25	4.2	16.6
32	8	6	4	32	32	5.4	21.2
40	12	6	4	40	40	6.7	26.6
50	18	6	4	50	50	8.4	33.2
63	24	8	6	63	63	10.5	42.0
75	30	8	6	75	75	12.5	50.0
90	40	8	6	90	90	15.0	60.0
110	50	10	8	110	110	18.4	73.2